

... units with 30 x 5 x ...
at Business A.A, B.B and C.D

... at right angle to double ceiling ...
at 400mm dia.

... to be provided by forming gable valleys

... Supply and hang by approved firm

... continuous steel corner brad and S.F.D. ...
support post at corner window as designed and ...
manufactured by Kaystone Lintels Ltd. and first ...
designed to support load from preformed ...
units, hollowed out upper floor 215mm ...
thick (to bear load to gable wall) (order to ...
forward details for Building Control 3 weeks prior ...
to site delivery

... high level vent providing permanent ...
ventilation (equivalent to 0.01m² without ...
area of a 150mm dia. pipe to MCHL ...
containing of lead corder

... 150mm dia. permanent ventilation pipe from ...
ventilated roofspace to high level gill in side of ...
chimney breast a Family Room containing stove

... French doors fitted with Easy ...
Opening Device - 72mm dia. ...
threshold

... special bearing above as ...
supplied by employer and ...
included in accordance with ...
manufacturer's recommendations

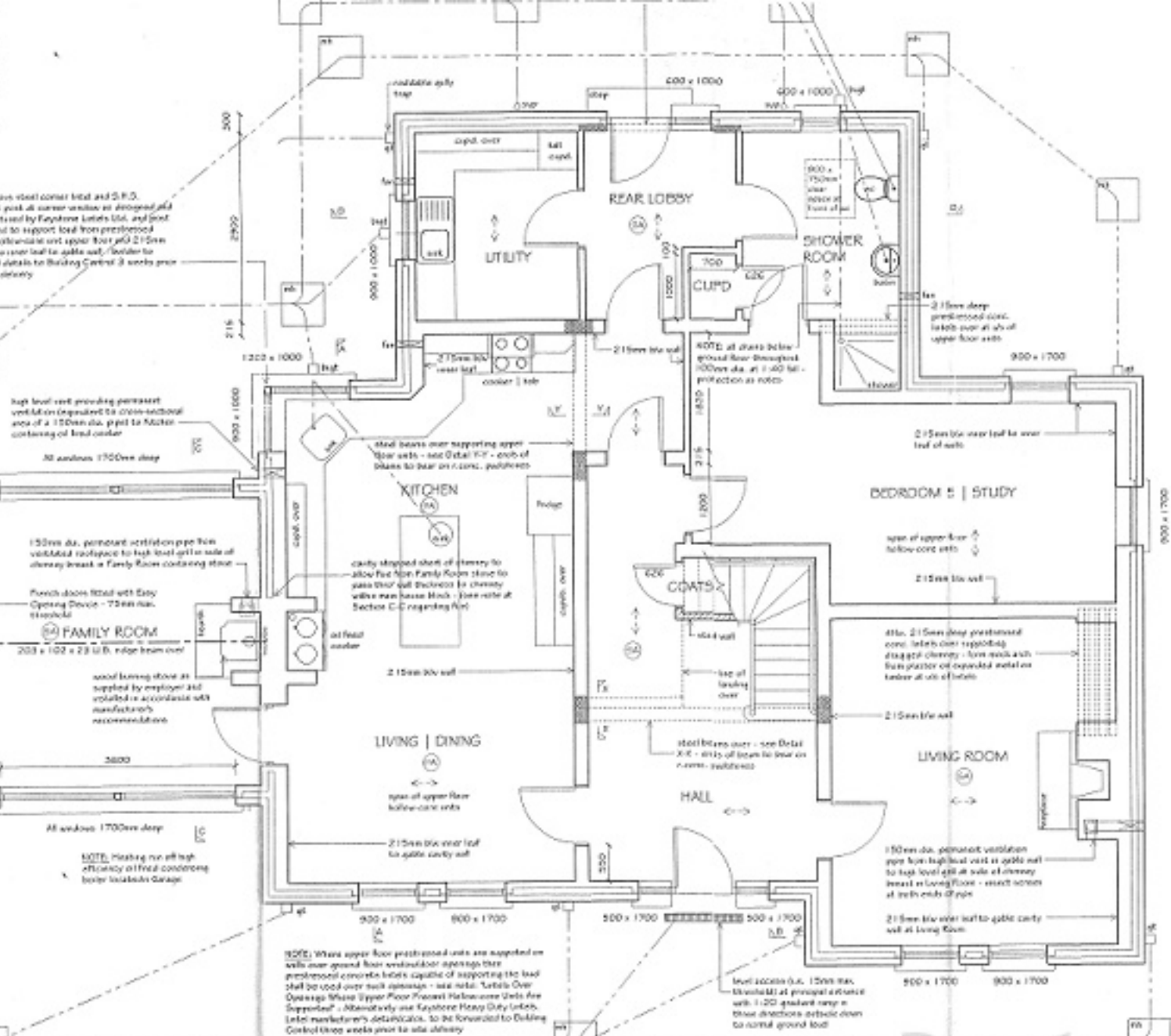
... steel lintel with support ...
to form window arch ...
above and level U posts ...
to enable of vent. load from roof ...
over. Lintel and posts ...
and manufactured ...
units (to ...
details / gills, to be ...
delivered

... NOTE: Heating on off high ...
efficiency of fire condensing ...
boiler located in Garage

... NOTE: Where upper floor preformed units are supported on ...
walls over ground floor ventilator openings the ...
preformed concrete lathes capable of supporting the load ...
shall be used over such openings - see note: Terrace Over ...
Openings Where Upper Floor Preform Hollow-core Units are ...
Supported - Alternatively use Kaystone Heavy Duty Lathes. ...
Lathes manufacturer's details. To be forwarded to Building ...
Control three weeks prior to site delivery

... NOTE: All steel beams supporting walls or upper floor ...
preformed units to receive 2% dimensional shrinkage and ...
certificate for protection to be forwarded to Building Control ...
three weeks prior to site delivery

... NOTE: Heating on off high efficiency of ...
fire condensing boiler located in Garage



NOTE: Where upper floor preformed units are supported on walls over ground floor ventilator openings the preformed concrete lathes capable of supporting the load shall be used over such openings - see note: Terrace Over Openings Where Upper Floor Preform Hollow-core Units are Supported - Alternatively use Kaystone Heavy Duty Lathes. Lathes manufacturer's details. To be forwarded to Building Control three weeks prior to site delivery

NOTE: All steel beams supporting walls or upper floor preformed units to receive 2% dimensional shrinkage and certificate for protection to be forwarded to Building Control three weeks prior to site delivery

NOTE: Heating on off high efficiency of fire condensing boiler located in Garage

level access (i.e. 150mm dia. threshold) at principal entrance with 1.20 gradient ramp in these directions advised down to normal ground level

1.20 gradient ramp in these directions advised down to normal ground level

GROUND FLOOR PLAN

