



MCCONNELL

CHARTERED SURVEYORS & PROPERTY CONSULTANTS

028 90 205 900

www.mcconnellproperty.com

RESIDENTIAL



TO LET

Three bedroom mid terrace house

**25 Princes Crescent
Newtownabbey
BT37 0BA**



- **Spacious three bedroom family home in good condition.**
- **Located in a very popular residential area just off the Doagh Road.**
- **Close to local amenities and transport links.**



The Independent
Commercial Property
Consultants Network

MONTGOMERY HOUSE,
29-31 MONTGOMERY STREET, BELFAST BT1 4NX

T: 028 90 205 900
E: info@mcconnellproperty.com



McCONNELL
CHARTERED SURVEYORS & PROPERTY CONSULTANTS

028 90 205 900

www.mcconnellproperty.com

LOCATION

This property is located in a very popular residential area just off the Doagh Road and will suit a family or young couple. It is within easy walking distance to schools and shops. The property benefits from excellent transport links to Belfast City Centre.

DESCRIPTION

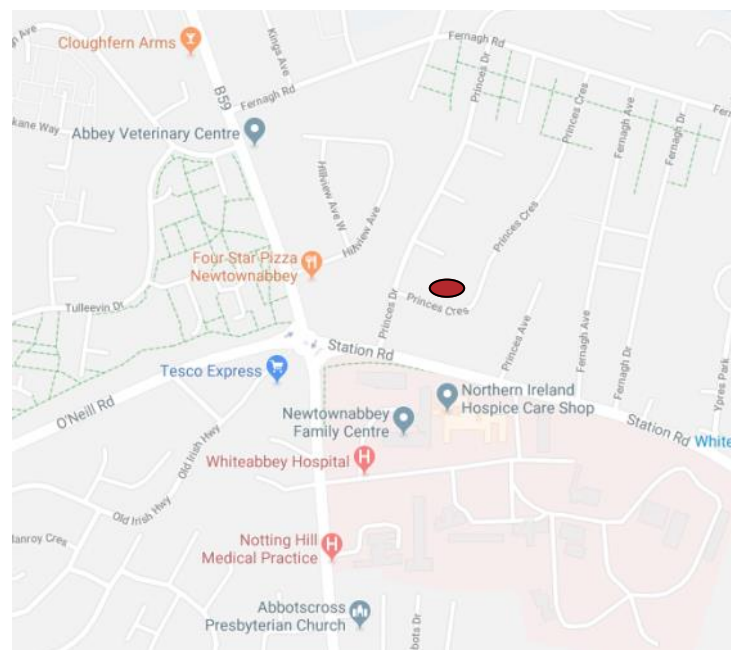
This semi-detached property comprises of a living room, dining room, kitchen, three bedrooms, two double and one single, and a family bathroom with a three piece suite. It has oil fired central heating and uPVC double glazed windows throughout. There is a garden to the front and rear of the property.

LEASE DETAILS

Lease: Minimum one year

Rent: £485.00 per month

Rates: £52.65 per month



VIEWING

Strictly by appointment with McConnell Chartered Surveyors.

Tel: 028 90 205 900

Website: www.mcconnellproperty.com

Email: diane.alexander@mcconnellproperty.com
emma.shannon@mcconnellproperty.com



The Independent
Commercial Property
Consultants Network

MONTGOMERY HOUSE,
29-31 MONTGOMERY STREET, BELFAST BT1 4NX

T: 028 90 205 900

E: info@mcconnellproperty.com

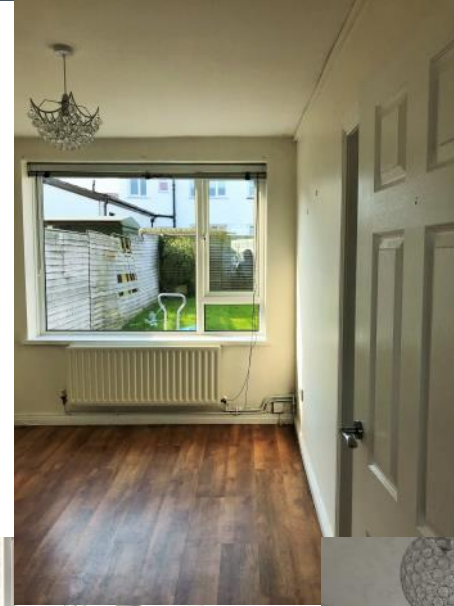


McCONNELL

CHARTERED SURVEYORS & PROPERTY CONSULTANTS

028 90 205 900

www.mcconnellproperty.com



Copyright 2113 2019

McConnell Chartered Surveyors for themselves and for the vendors/landlords of this property whose Agents they are, give notice that:- (i) The particulars are set out as a general outline for the guidance of intending purchasers or lessees and do not constitute part of an offer or contract. (ii) All descriptions, dimensions, references to condition and necessary permissions for use and occupation and other details are given in good faith and are believed to be correct, but any intending purchaser or tenants should not rely on them as statements or representations of fact but must satisfy themselves by inspection or otherwise as to the correctness of each of them. (iii) No person in the employment of McConnell Chartered Surveyors has any authority to make or give representation or warranty in relation to this property.