



121 Benmore Drive
Belfast
BT10 0EJ

Asking Price
£115,000

Dougan

RESIDENTIAL

Telephone 028 9030 8855
www.douganproperty.com



KEY FEATURES

- Very Well Presented Mid Terrace Close To Finaghy Village
- Quiet Cul-De-Sac Location
- Main Arterial Routes And Public Transport Services Easily Accessible
- Bright And Spacious Living Room
- Modern Kitchen Within Dining Area
- Three Generous Bedrooms
- First Floor Bathroom In White Suite
- Excellent Storage Throughout
- Well Maintained, Private Rear Garden Laid In Lawn
- Gas Heating
- Double Glazed
- Early Viewing Advised



SUMMARY

Very well presented mid terrace located in a quiet cul-de-sac Finaghy Road South. The property benefits from an excellent location within walking distance of all the amenities of Finaghy Village. Public transport services and main arterial routes are close at hand offering ease of access to Belfast City Centre.

The property has been very well maintained by the present owners and comprises of a bright and spacious living room, modern kitchen with dining area and storage on the ground floor. To the first floor are three bedrooms, bathroom in white suite and separate w.c.

The property further benefits from well tended front and rear gardens, gas heating and double glazing.

Early viewing is advised to appreciate this fine home.



ACCOMMODATION:

Ground Floor

ENTRANCE HALL: Wood strip flooring, pvc front door

LIVING ROOM: 13' 9" x 11' 9" (4.19m x 3.58m) Wood strip flooring, cornicing, dado rail

KITCHEN WITH DINING AREA : 21' 7" x 6' 8" (6.58m x 2.03m) Excellent range of high and low level units, formica work surfaces, integrated four ring halogen hob (Hotpoint) and oven, extractor fan over, space for fridge freezer, plumbed for washing machine

STORAGE 14' 4" x 5' 7" (4.37m x 1.7m) Light and power

First Floor

LANDING: Linen closet, roof space access

BEDROOM (1): 11' 9" x 10' 1" (3.58m x 3.07m)

BEDROOM (2): 9' 10" x 9' 2" (3m x 2.79m) Built in storage

BEDROOM (3): 10' 2" x 6' 9" (3.1m x 2.06m) Built in storage

BATHROOM: White suite comprising a panel bath with electric shower over, pedestal wash hand basin with chrome taps, tongue and groove ceiling, spot lighting

SEPARATE W.C: Low flush w.c, wash hand basin

Outside

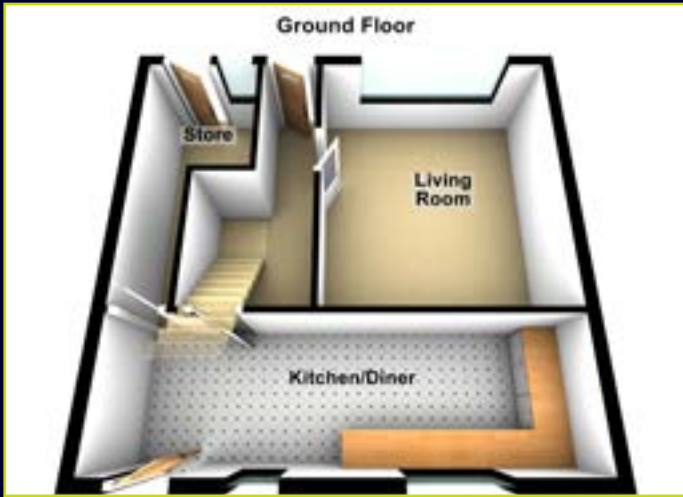
Front garden in lawn.

Rear garden in lawn with timber fencing.

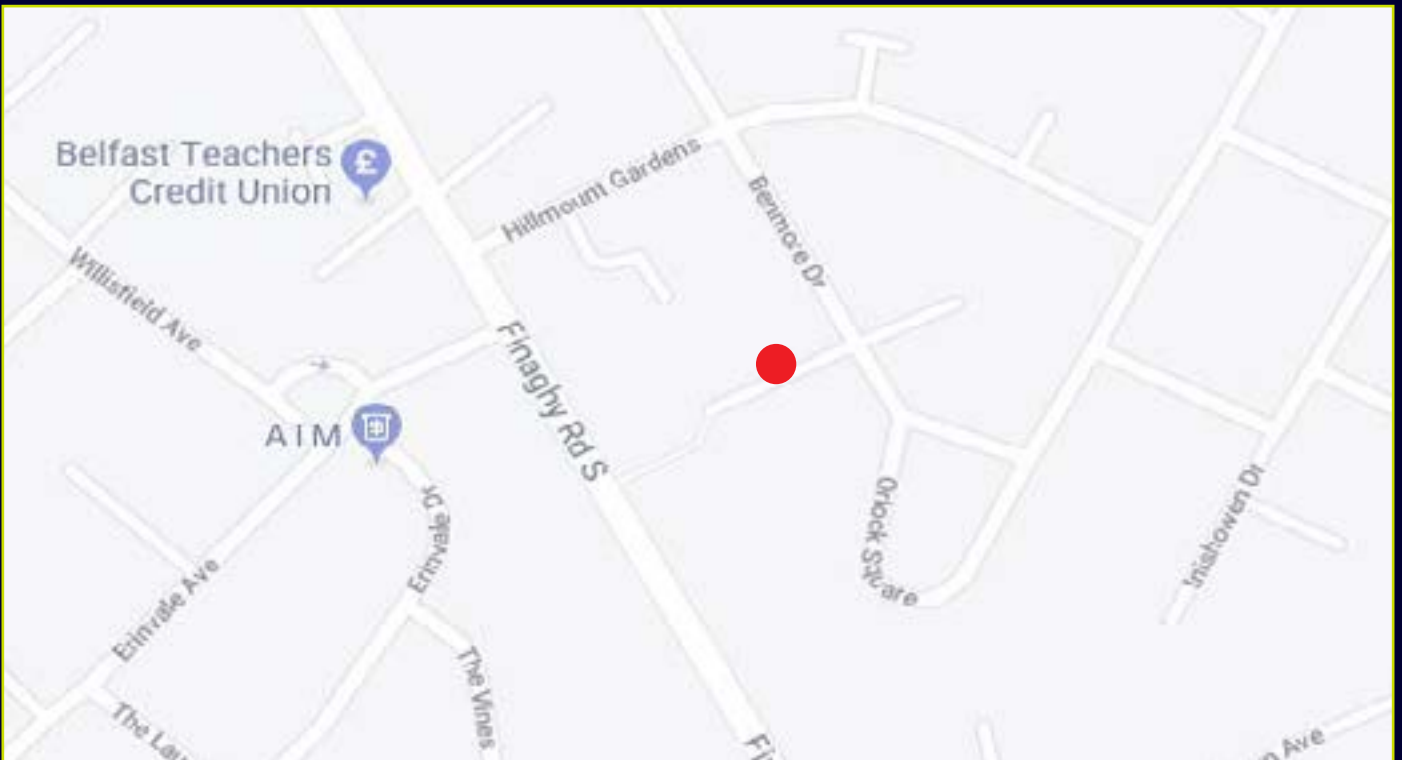




FLOOR PLANS (NOT TO SCALE)

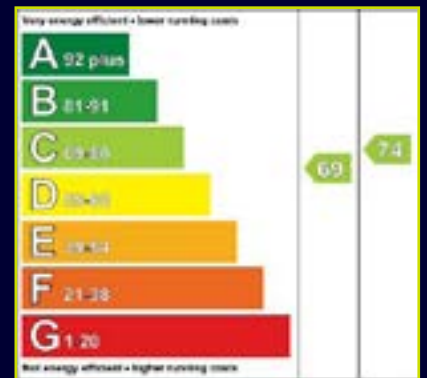


LOCATION MAP



DIRECTIONS: Travelling down Finaghy Road South from Upper Malone turn right on to Hillmount Gardens. Benmore Drive is the first street on the right. No 121 is located in the first cul-de-sac on the right.

EPC



Dougan
RESIDENTIAL

6 Orpen Shopping Centre Upper Lisburn Road
Belfast BT10 0BG
Telephone 028 9030 8855
Email info@douganproperty.com
Web www.douganproperty.com

Dougan Residential for themselves and for the Vendors or Lessors of the property whose agents they are give notice that; i) these particulars are given without responsibility of Dougan Residential or the Vendors or Lessors as a general outline only, for the guidance of prospective purchasers or tenants, and do not constitute the whole or any part of an offer or contract; ii) Dougan Residential cannot guarantee the accuracy of any description, dimensions, references to condition, necessary permissions for use and occupation and other details contained herein and any prospective purchasers or tenants should not rely on them as statements or representations of fact but must satisfy themselves by inspection or otherwise as to the accuracy of each of them; iii) no employee of Dougan Residential has any authority to make or give any representation or warranty or enter into any contract whatsoever in relation to the property; iv) VAT may be payable on the purchase price and/or rent, all figures are quoted exclusive of VAT, intending purchasers or lessees must satisfy themselves as to the applicable VAT position, if necessary by taking appropriate professional advice; v) Dougan Residential will not be liable, in negligence or otherwise, for any loss arising from the use of these particulars.